



**The Dumont 27 Albert Embankment, London, SE1 7AQ**

**£4,983 Per month**



Districts London are proud present this spacious river facing two bedroom property in the prestigious Dumont development on Albert Embankment.

This luxury property comprising an open plan reception, a modern integrated kitchen fitted with high spec appliances, spacious bedrooms and two elegant bathrooms to soak away after those long days at work. Furthermore, wooden flooring throughout and carpet in the bedroom adds to the over feel of living in luxury. With ample storage throughout and finished to a high standard, this property is perfect for a professional couple or mature students.

The Dumont offers a High-End lifestyle for those moving in the fast lane. Located on Albert Embankment, just a few moments from the heart of London with it's many attractions including the Tate Modern, Big Ben, Houses of Parliament, London Eye, Theatre's, Borough market and London's South Bank. Photos have been digitally staged

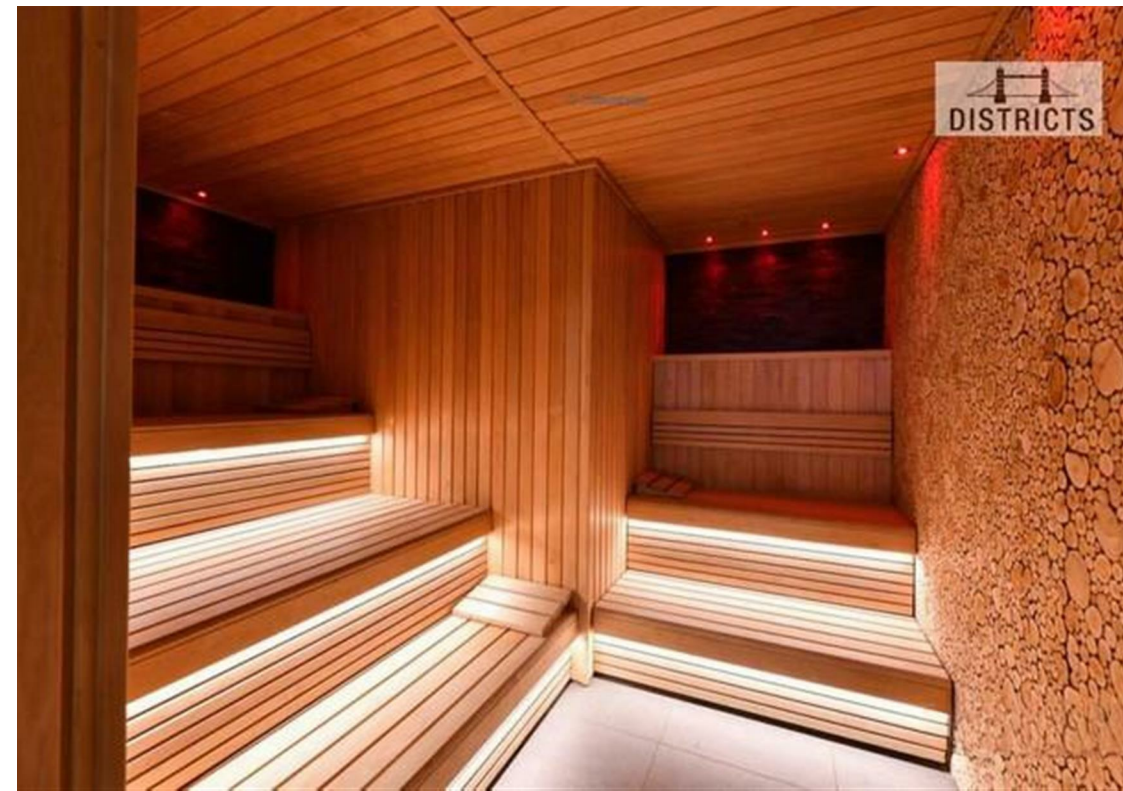
Available 10th June 2026 and offered furnished. To arrange a viewing please call 020 7139 5062.

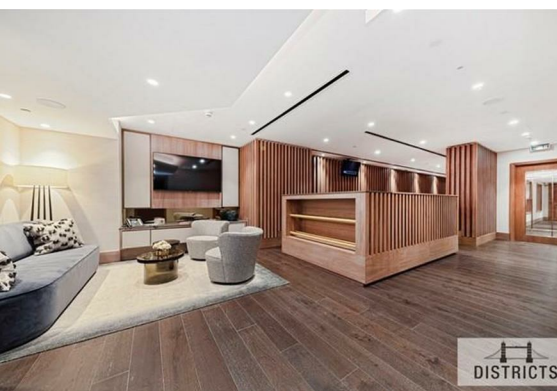
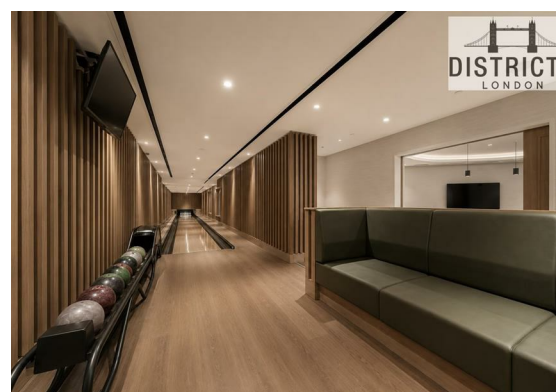
EPC: B

Council Tax Band: G

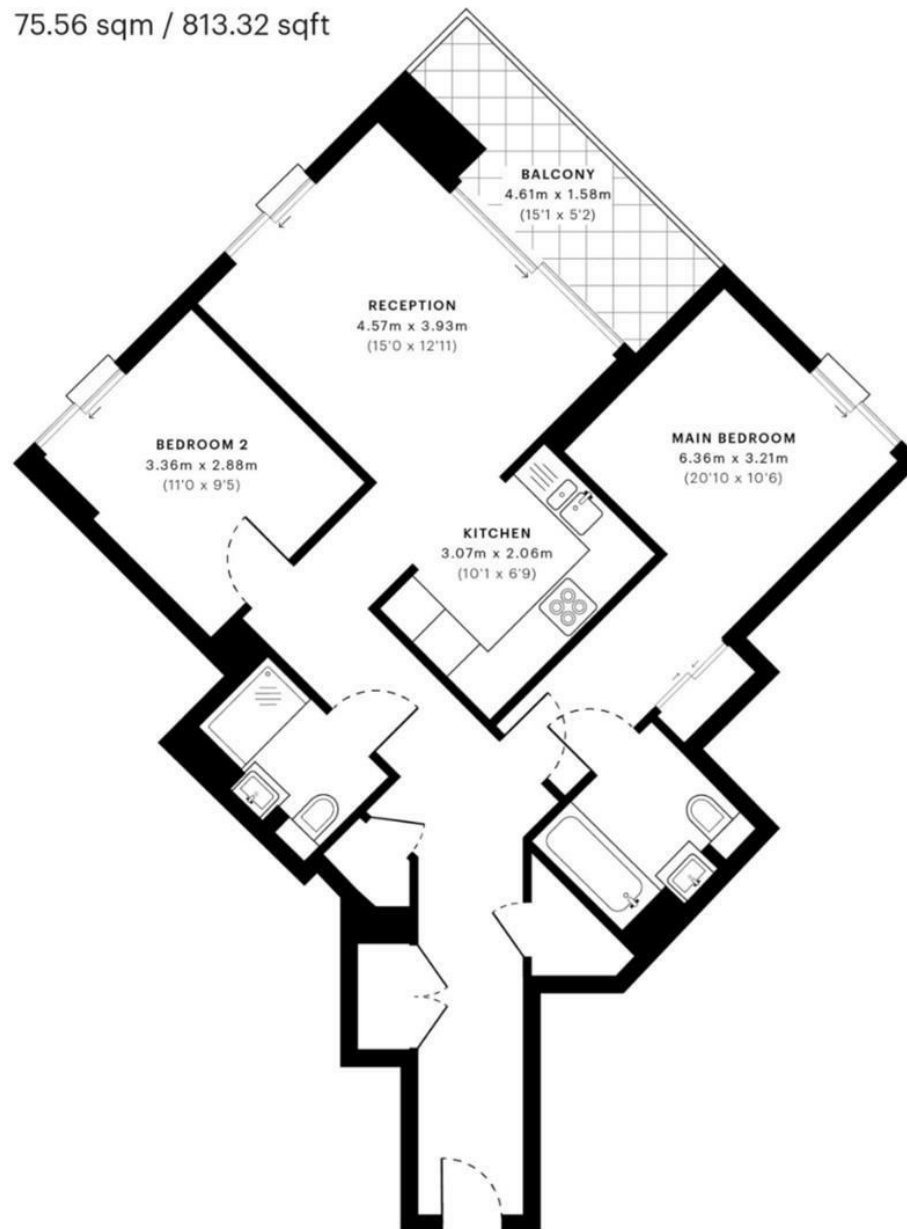
Change of contract fee: £50 including VAT  
Holding Deposit - £1,150 per week (1 weeks rent, subject to agreed offer)


Electricity supply – Mains | Heating, Hot Water – Communal supply | Water Supply & Sewerage – Mains | Lift Access  
To check broadband and mobile phone coverage please visit Ofcom





75.56 sqm / 813.32 sqft



Energy Efficiency Rating		
	Current	Potential
Very energy efficient - lower running costs		
(92 plus) <b>A</b>		
(81-91) <b>B</b>		
(69-80) <b>C</b>		
(55-68) <b>D</b>		
(39-54) <b>E</b>		
(21-38) <b>F</b>		
(1-20) <b>G</b>		
Not energy efficient - higher running costs		
<b>England &amp; Wales</b>		EU Directive 2002/91/EC 

These particulars, whilst believed to be accurate are set out as a general outline only for guidance and do not constitute any part of an offer or contract. Intending purchasers should not rely on them as statements of representation of fact, but must satisfy themselves by inspection or otherwise as to their accuracy. No person in this firm's employment has the authority to make or give any representation or warranty in respect of the property.